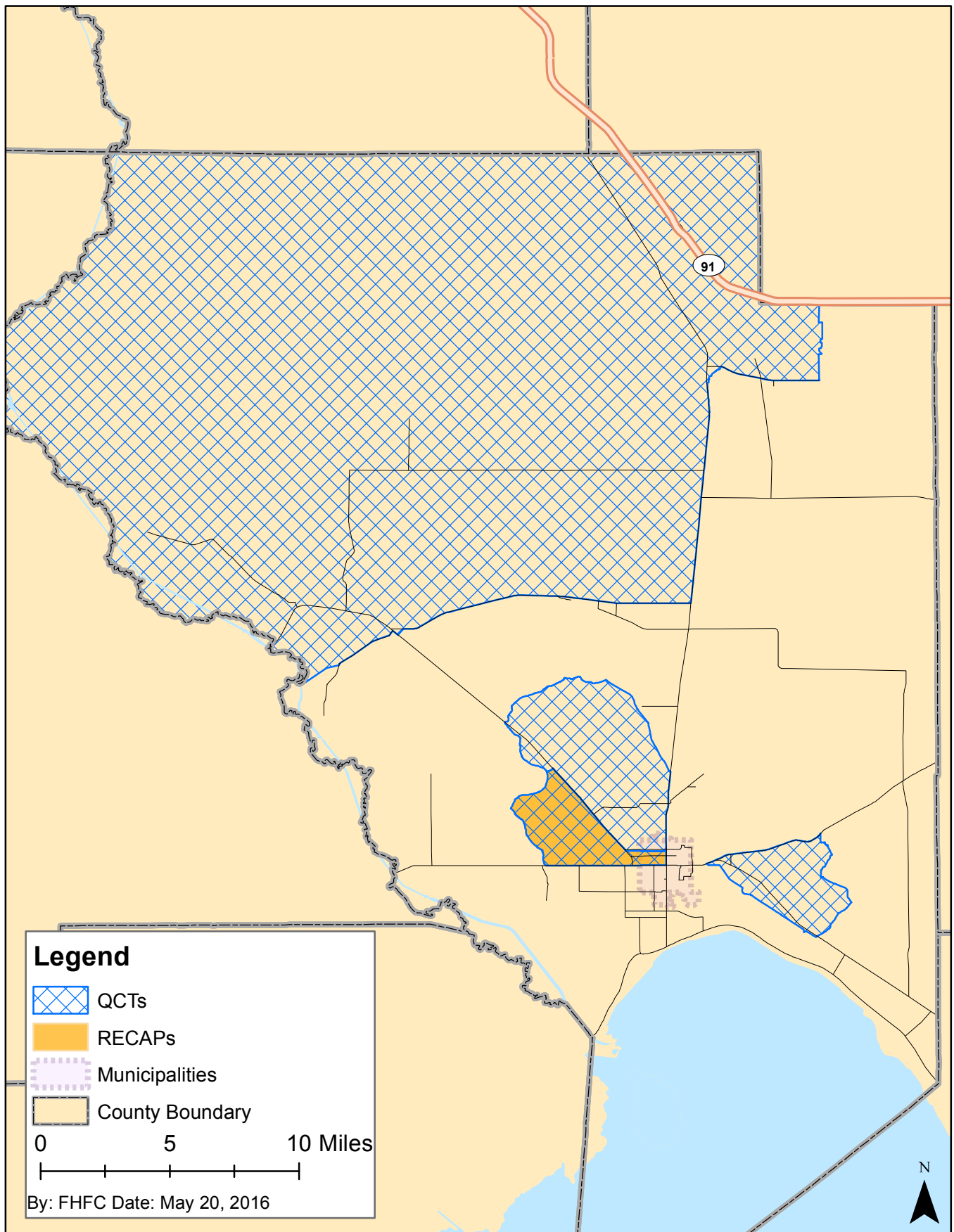
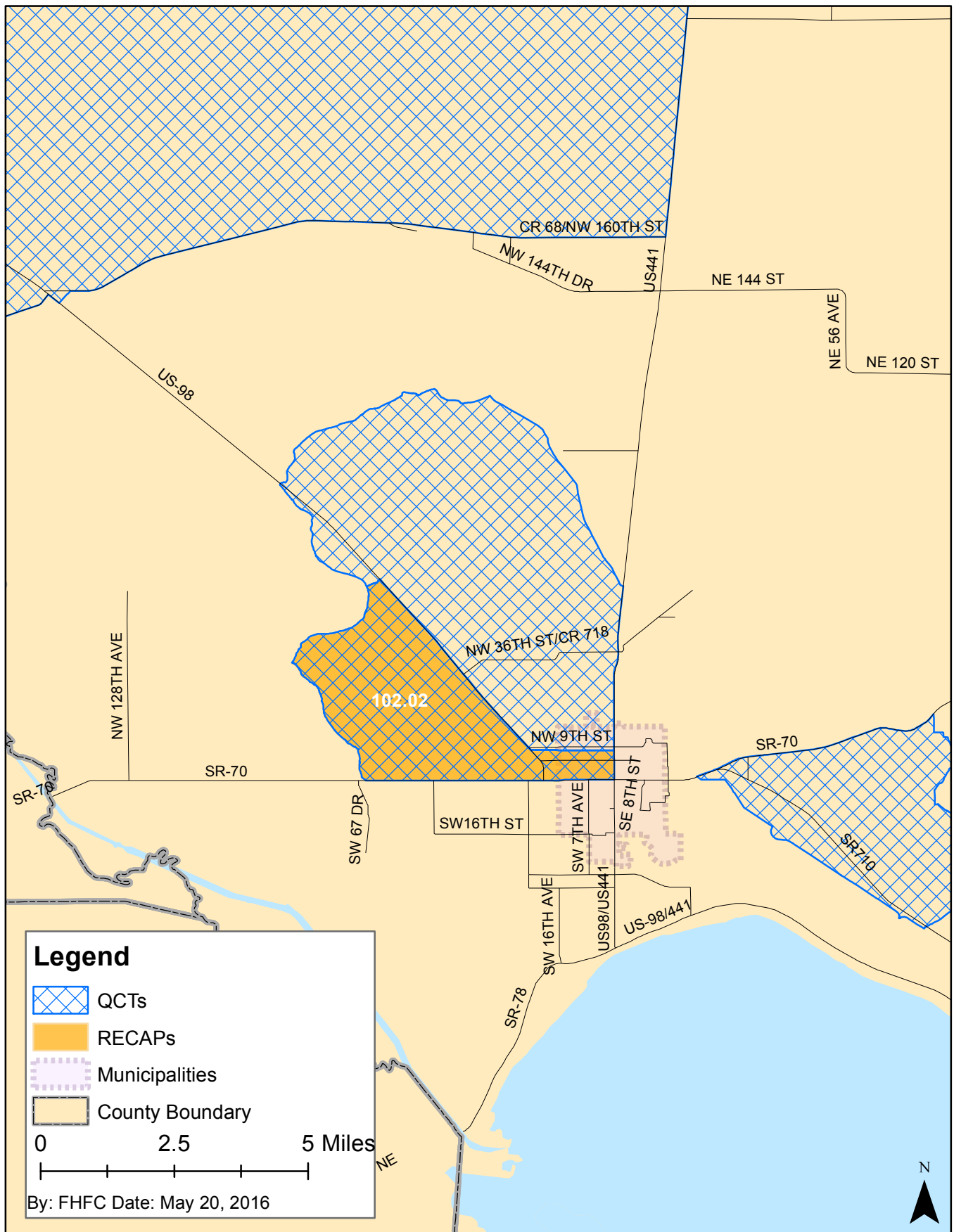


Okeechobee County QCTs and RECAPs



This map shows those census tracts which have been designated by the US Department of Housing and Urban Development as Qualified Census Tracts under Section 42 of the Internal Revenue Code. In addition, this map shows areas that are characterized by both disproportionate minority concentration and high poverty (Racially/Ethnically Concentrated Areas of Poverty) according to data derived from the three most recent 5yr averages of the American Community Survey (2012, 2013, and 2014).

Okeechobee County QCTs and RECAPs



This map shows those census tracts which have been designated by the US Department of Housing and Urban Development as Qualified Census Tracts under Section 42 of the Internal Revenue Code. In addition, this map shows areas that are characterized by both disproportionate minority concentration and high poverty (Racially/Ethnically Concentrated Areas of Poverty) according to data derived from the three most recent 5yr averages of the American Community Survey (2012, 2013, and 2014).