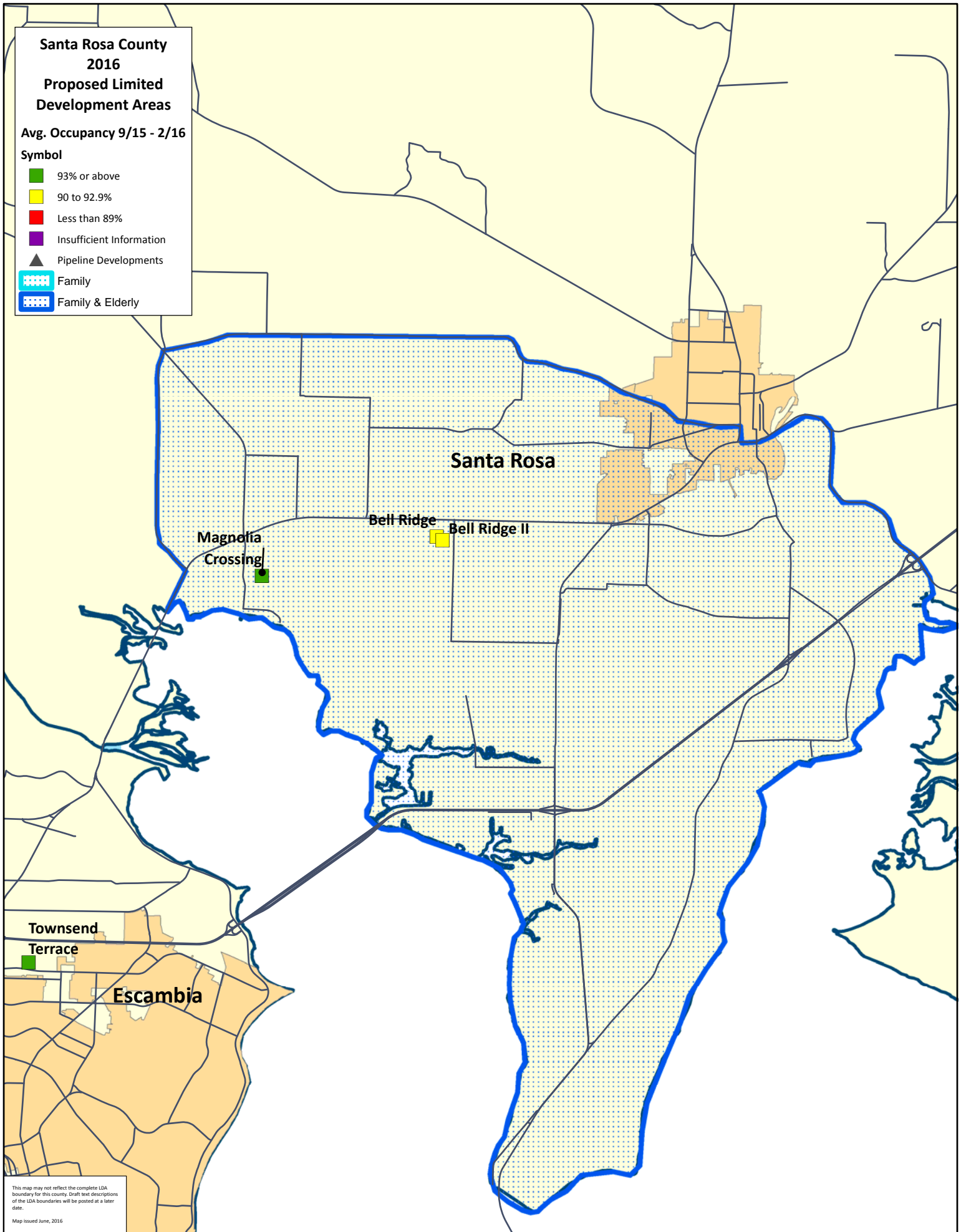


**Santa Rosa County
2016
Proposed Limited
Development Areas**

Avg. Occupancy 9/15 - 2/16

Symbol

- 93% or above
- 90 to 92.9%
- Less than 89%
- Insufficient Information
- Pipeline Developments
- Family
- Family & Elderly



Santa Rosa

**Magnolia
Crossing**

Bell Ridge

Bell Ridge II

**Townsend
Terrace**

Escambia

This map may not reflect the complete LDA boundary for this county. Draft text descriptions of the LDA boundaries will be posted at a later date.