

Santa Rosa County 2014 Proposed Limited Development Areas

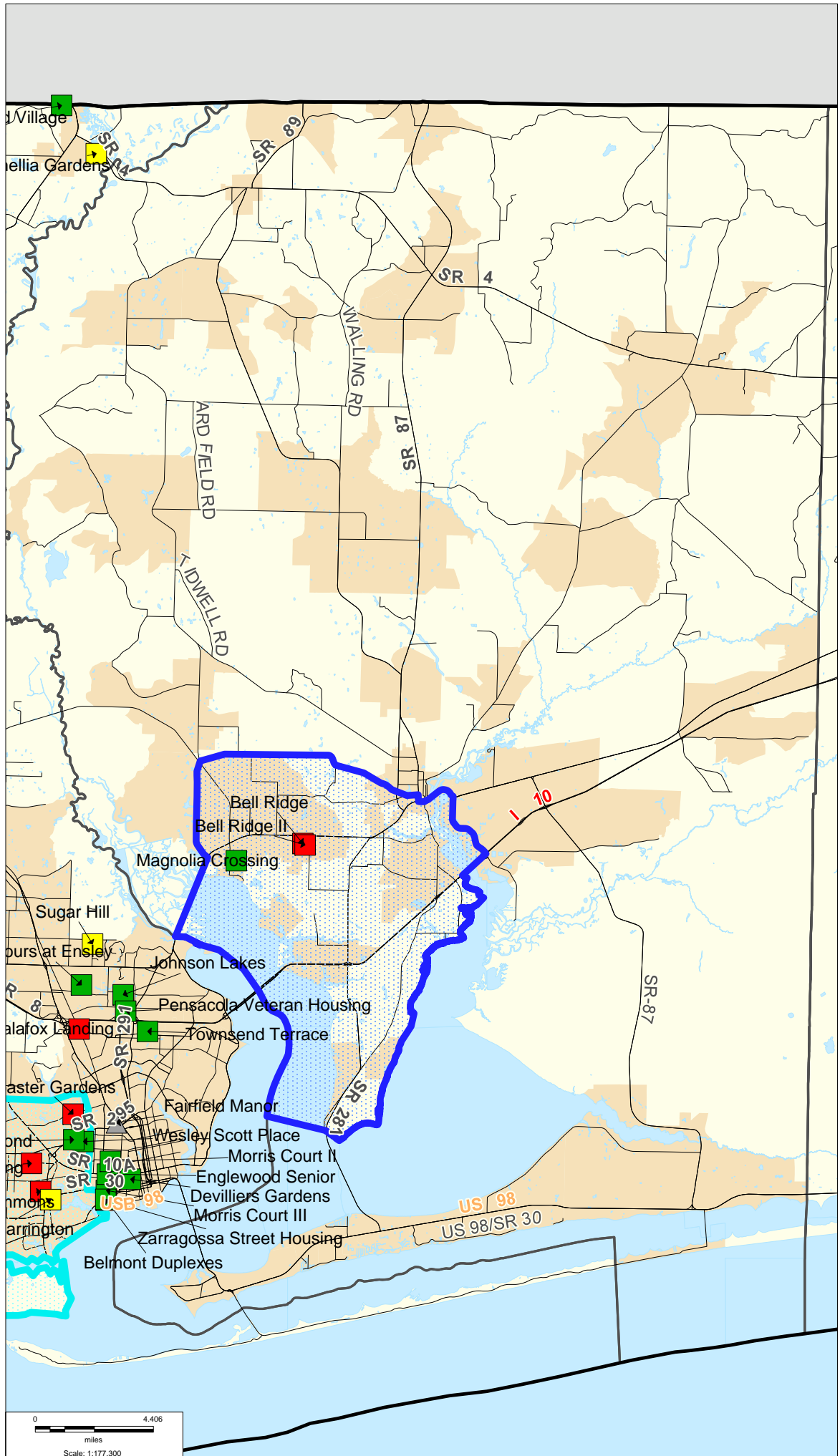
Avg. Occupancy 11/13-4/14
*Active Developments Unless Noted

- 93% or above
- 90% to 92.99%
- Less than 90%
- Insufficient Information
- ▲ Pipeline Developments

Restriction Types

- All
- Family & Elderly
- Family

- Active Developments
- SMI and/or ELI Developments
- ◆ Guarantee Developments
- ▲ Pipeline Developments



This map may not reflect the complete LDA boundary for this county. Please refer to the draft description of the LDA boundaries, which is posted along with these maps. Map issued July 7, 2014